

# Automatic Tap for Double-sink SLU 10

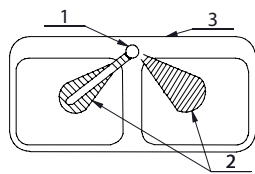
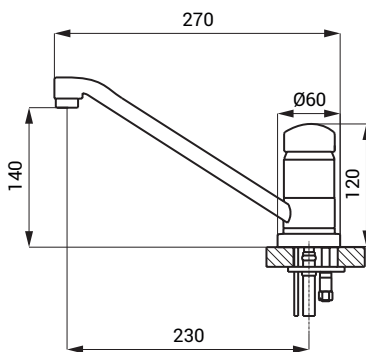


## Characteristics



- **hygienic flush**
- SLU 10 is a special sink tap destined for installation on double-sink or combined sink with washbasin in one, it has got a swivel spout and two sensors
- function of automatic water stop after 5 minut of continuous flow
- water is flowing as long as hands are in the active range (max. range to 0,25 m)
- water stops flowing after removal of hands from the active range of sensor after adjustable time delay
- adjustable time delay from 0,25 to 7,75 sec.
- possibility of changing of time delay, active range and switching off by SLD 03
- washbasin mixers are destined for cold and hot water, temperature is regulated by an integrated mixer (ceramic cartridge)
- monitoring of battery capacity (only for SLU 10B)
- START/STOP program

## Dimensions



- 1 - tap with an integrated electronics  
2 - active range  
3 - double-sink

## Technical Specification

### Operating voltage

- SLU 10 24V DC
- SLU 10B 9V

### Power input

- operating by 24V DC 13 W
- operating by 9V 11 W

### Battery life

- lithium 9V, type U9VL approx. 2 years (100 uses per day)

### Active range

- standard 0,17 - 0,25 m
- START/STOP program 0,05 - 0,15 m

### Recommended flow pressure

- 0,1 - 0,6 MPa
- Rate of flow** 12 l/min. (inf. data)
- Water inlet** male thread G 1/2"

## Supply Specification

- SLU 10 - Supply No. 03100  
SLU 10B - Supply No. 03105

tap body with mixer and elongated spout; sensing head with an integrated electronics; battery holder (only for models with „B“ index); elektromagnetic valve (2 pcs.), connecting hoses; angle valve with filter and check valve (2 pcs.); lithium battery SLA 09 (only for SLU 10B)

## Recommended Accessories

- SLZ 01Y - Supply No. 05012  
SLZ 01Z - Supply No. 05011  
SLZ 03 - Supply No. 05030  
SLZ 04Y - supply No. 05041

- SLZ 04Z - supply No. 05042

- SLD 03 - Supply No. 07030

- SLA 09 - Supply No. 06090

external power supply 230/24V DC for operating of max. 1 pc. of washbasin tap  
external power supply 230/24V DC for operating of max. 2 pcs. of washbasin taps  
switched power supply 230/24V DC for operating of max. 4 pcs. of washbasin taps  
external power supply 230/24V DC on DIN rail for operating of max. 2 pcs. of washbasin taps  
external power supply 230/24V DC on DIN rail for operating of max. 4 pcs. of washbasin taps  
universal remote control for an adjustment of parameters of all products with infra-red electronics  
lithium battery 9V/1200 mAh, type U9VL, battery life approx. 2 years at 100 uses per day (only for SLU 10B)